

Coastal Quilters Inc.

May 2013
Newsletter



P.O.Box 57-099
Mana 5247

www.coastalquilters.org.nz
Email: coastalquilters@gmail.com

NEXT MEETING – Work Day

SATURDAY 11th May 2013 10.30am-4pm

Milton Wright with his tempting fabrics, Liz Fisher with needles and threads for sale, & the 'scissor man' will all be present.

Bring to Meeting

B.O.M. You have two months to complete April's B.O.M. Return to the June meeting.
Library Books. No library this month – see library report

Lunch

Money for the raffle, sales table.

There will be tables for pinning quilts up for you to share
Doors open at 10.30am. Helpers please arrive for your duties at 10.15am
Please remember your mug or cup for your tea.

ROSTER

May – work day 10.30am -4pm

Hall, set-up

Brenda Anderson, Diane Quigan, Wendy Oliver

Hall, pack-up

Judith Havill, Judith Shilling, Marilyn Piercy

Kitchen

Ruth O'Neill, Gretta Dymond

Raffle Seller

Lesley Varcoe

June

Hall

Melissa Anderson, Bobby Duncan, Bridget Quigan

Kitchen

Eunice Baillie, Merylyn Maclachan

Sale

Judith Bell, Lesley Dallaway

Library

Elizabeth Charlton, Christine Johnco

Frames

Maggie Allan, Heather Evans, Chris Kenna

Raffle Seller

Pat Paulsen

Thank you Ladies for your help with these duties to make the meeting run smoothly. If you are unsure of what to do please ask Lesley Hall at the door as you come in.

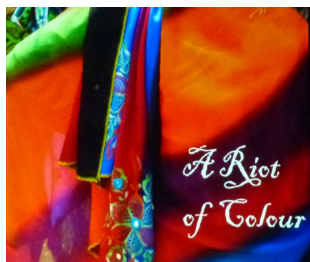
Please arrange a replacement if you can't do your duty, or let me know 2399718 or lougeoff@xtra.co.nz.

Thank you-**Louise Shirkey**.

Greetings to you all...now that the weather is getting cooler it is certainly proving to be a good time to stay indoors and sew a little more. Autumn & Winter are good productive seasons I have found!! We have recently been given a cheque from the Coast to Coast committee for \$740.34 as our share of the profit. From the day. This was a one day event that was organised by our club and Kapiti Coast Quilters on Saturday 6 October 2012. That was a very pleasing result actually as we had trouble selling tickets to this event, I ma not sure why because it was a fabulous day.

Our 25th Anniversary exhibition has opened at Pataka so make sure you get along and see it if possible. You are also very welcome to bring your stitching along in the weekends, stay a while, have a coffee and enjoy the atmosphere.

In July we will be holding our AGM and we will be looking for new committee members – so if you are interested in becoming more involved in the running of the club and not sure what it entails, I will be happy to have a talk with you. It really is a great way to get to know more ladies in the club and you learn such a lot and is very worthwhile. That's all from me for now- happy stitching- *Lou Nicoll*



April Meeting – Bob Maysmor

A Riot of Colour was a very apt name for Bob's talk about his travels and interest in textiles. It is with good reason he has been described as 'Pailinesque' as was apparent as he shared the photos and stories of his travels through Tunisia, Cairo, Libia, Southern Nigeria, Camaroon, Uzbekistan through to N.E. India, Burma, north Korea and Singapore, and that was not all. We were delighted with photos from windows which protruded from buildings in Tunisia (great for keeping up with the gossip!) to wonderful coloured rugs, camels, back strap weavers, indigo dyers (try approx 10 buckets of ash, 100grms of indigo and 6 pails of potassium -camels urine – and see the results) colourful textiles wool, cotton and synthetics, hats, and wonderful beaded clothes. In North Korea the clothes for performances were colourful and there was not a person out of time,so perfect but where were the smiles even though the people were dancing. Sad. Rob's photos of cultures who have so much less we have and who live in comparatively colourless environments but who wear such wonderful colours should help many of us to rethink our use of colour. Although Rob kept making comments about going over time I very much doubt if anyone minded as he was so interesting with a delightful sense of humour. He could probably teach us a thing or two about shopping too!

Thank you Bob Maysmor

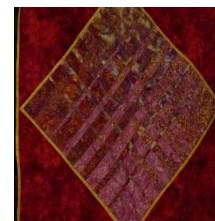
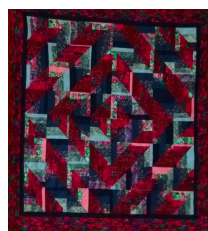
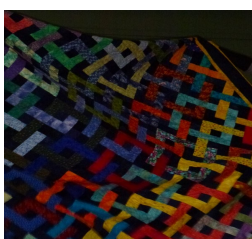


Block of the Month was won by Jocelyn Todd.

Profits Sales \$60 Raffle \$106.50

Show and Tell Once again we were treated to inspirational quilts of varying styles and colours. Thank you for sharing them with us.

Don't forget that if you have a quilt or work to share but do not want to get up onto the stage you can leave it labelled at the bottom of the steps onto the stage and someone else will show it for you.



Welcome Quilts

Just a reminder that this is a purely voluntary activity within the club and there is absolutely no expectation that these quilts be worked on unless you want to. For members who do wish to help with the quilts it is a fantastic opportunity to practice designing, piecing and especially quilting - on something other than the quilt top that you have just spent lots of time and money on and do not want to quilt yourself.

As you saw at the last meeting we have recently finished a number of quilts and there are quite a few more that are nearing completion as well. If you want to be involved please feel free to contact me.

The Red Cross Refugee Services are very grateful for the quilts as are the refugees themselves. The refugees arrive in the county with very few possessions and vary rarely anything new, to have a new handmade quilt as a welcome present is very special.

Thank you to all the helpers.

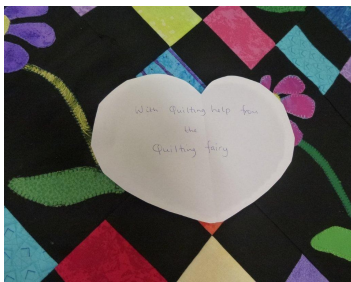
Gayle O'Brien 2338454



April Retreat

Another retreat has come and gone! A weekend of fun, early morning walks, trips to Thimbles and Threads, companionship, encouragement, even a kind quilting fairy who visited one night but above all hand sewing progressing and sewing machines whirring. No wonder there was a perfect heart in the bottom of a coffee cup. Here are the comments and hints written to share with you all.

- P. J's need mending? Bring them on retreat so you have to mend them before you can go to bed!
- The band finished at 12 then the trombone took over (my kingdom for ear plugs).
- iPhone or iPad app for fabric calculations, does metres or inches – 'Quilt Calculator'. It is free from iTunes. You can put in measurements for borders or blocks.
- Tena Lady for laughing.
- Late night with music, early morning with fire alarm! (*I believe those in the shower took very little notice!*)
- Oh for a lovely roast dinner.
- From imported weta's to a lost watch – who would have thought the latter would be hanging on their bra all day!
- Two trips to Thimbles & Threads – how lucky is that?
- Great location, got loads done, good company, was great.



Quilting Fairy's footprint!



Oxford (UK) link



This owl flew in from Oxford with the accompanying message:-

'Gwyneth brought along an owl block which she had made from the pattern in the NZ group newsletter. I am going to attach it to this email as she would like the NZ quilters to see it too. Its lovely having their newsletter'

Friendship is sewn with love and measured by kindness.

Membership

We have 3 new members and 1 returning member. Welcome to Christine McKenna, Maggie Simcox, Annie Brodie our new members, and Heather Harrison our returning member. Our membership now stands at 137.



Subs for the year 2013/2014 are due from the 1st June 2013.

Forthcoming Retreats

Our next retreat is the "Mini Retreat" from 1pm Friday 21st - Saturday 22nd June at St Andrews Hall, Steyne Ave, Plimmerton.

The cost is \$20.00. This is the first time we have run this type of Retreat, so we are still working out details.

We are thinking a shared meal Friday night, then home to your own beds, returning after breakfast on Saturday.

Lunch provided on Saturday, dinner at the Taj restaurant Saturday night, then home.

18 ladies have put their names down which is great, any more and we will need to start a waiting list.

We need you to pay at the May meeting or by direct credit. Our bank account is BNZ 020 524 0056822 00. You must email me at lougeoff@xtra.co.nz to let know if you pay by direct credit.

Lesley Hall has kindly offered to be "Camp Mother" and look after morning and afternoon tea etc. Nearer the time we need to know if you are bringing hand or machine sewing so we can work out how to set up the room and how many tables we need.

Our next Silverstream Retreat is the 20th-22nd September, I have 17 names for that.

Louise Shirkey Membership and Retreat Secretary.



Library Report

New books -

HOT OFF THE PRESS

“With Bold Thread and Needle” – Adventure in Vintage Needlework - Rosemary McLeod’s new book.

Not strictly quilting but all textile crafts are included in this very large and very heavy book.

Also – Mickey Lawler’s ‘SKYQUILTS’ – painting techniques to create landscape quilts.

Only one magazine this month – the latest New Zealand Quilter – which includes an article on scrap quilts by our own Marge Hurst.

Work Day – 11th May

The library will be open on work day – this will be an opportunity to spend more time in the library and see just what books and magazines are available. Time is short at our monthly meetings and with the library open on work day for several hours this will be a good time to browse.

We will be working with the magazines on this day, moving them from the baskets on the big blue trolley and putting them in smaller groups in new magazine folders. Also, just generally tidying and sorting books.

A reminder that the big filing cabinet in the store room is still available to go to a good home – please – does anyone want to take it away? We may yet have the blue trolley available too but have a few thoughts about a use that this could still be put to so are holding off offering this in the meantime.

Shirley Earles, Librarian



Almoner If you know of a member who has suffered a bereavement or illness please contact Louise Shirkey and a card will be sent on behalf of the Guild to let them know we are thinking of them.

25th Anniversary Exhibition

Our 25th Anniversary Exhibition opened on Wednesday evening at Pataka Art & Museum. Approximately 70 guests attended from all around the Wellington Region. 25 Quilts of various sizes and styles were chosen to be hung by Pataka, including the Coastal Quilters 'Dear Shirl' quilt, which was a group quilt made by a number of our members. It was lovely to see this hanging in a local gallery setting, at long last. We had positive feedback from the viewers on the night, and the Committee hope that you all get to visit Pataka to see our exhibition, as well as the other interesting exhibits there at the moment.

The following is from the welcome speech by Ngaire Flynn as Exhibition Co-ordinator

25 years Exhibition opening speech

I would like to welcome you all to this exhibition celebrating 25 years of Coastal Quilters

I would like to thank Helen Kedgley, Director of Pataka Art & Museum, Bob Maysmor, Senior Curator & Pataka staff, who chose and hung this exhibition of 25 pieces of work from the members of Coastal Quilters. It looks fabulous.

I would also like to thank Helen Marshall for her help in choosing these quilts, as well as thank her for teaching Marge Hurst how to quilt, because if she hadn't Coastal Quilters may have taken a lot longer to eventuate.

As 25 years ago Marge Hurst & Sue Bracken got together to see if they could find enough like-minded people in the area to start a quilting club. The first meeting was held in July 1988 with approximately 60 interested ladies attending. The club has grown; with approx. 410 ladies having been a member at some stage, over the past 25 years, membership is currently around 137.

3 years ago members of Coastal Quilters made the decision that new refugees who settle in the Porirua area should receive a 'Welcome' quilt for each bed in their new homes to welcome them to their new lives. Over the past 3 years we have donated over 165 quilts. Our thanks go to Gayle O'Brien and Isobel Whooley who have been the co-ordinators for these

We meet on the 2nd Saturday of each month, except January, at the Plimmerton Pavilion, where we have an extensive library for our members and a guest speaker.

Club members have had quilts accepted in National Exhibitions, as well as various galleries & museums in NZ as well as being accepted into overseas exhibitions in Australia, USA & Europe, where awards have been won. The club has been active in the running of the two quilt symposiums held in the Wellington area in 1993 & 2009, which helped to raise the profile of quilting in the Wellington Region.

Coastal Quilters is also very privileged to have amongst its members a number of highly respected teachers and speakers that are sought after by other clubs in NZ.

Thank you for your time. Please enjoy our quilts."

One person who missed being thanked on the evening was Barbara Marshall, former President of the Friends of Pataka., She helped Ngaire to convince Pataka to hang our quilts. She was thanked personally after the speeches with an apology for being missed during the speech.



Final Preparations in the Education Room

CLASSES 2013

Sheryl Meech will be tutoring a class for us on Saturday 17 August. This class will be utilizing the fancy stitches on your machine. You don't need to have a lot of stitches on your machine to register for this class. Cost \$25.

Adrienne Walker -Adrienne is from Waikanae and will be tutoring a class for us on Saturday 21 September. It is the **Monarch Butterfly Class**. The butterflies look so realistic - they look as though they will just fly away at any moment. Adrienne said you will easily finish one butterfly at the class and she will also show you how to make the 3D leaves and ferns that she has placed on the log. One day class - Cost \$25.



DANDELION & FRIENDS

SATURDAY 16 NOVEMBER

TUTOR – CAMILLA WATSON

A small pre-printed 'quilt top' will be enhanced with machine quilting in a variety of threads and a little hand work. Use your machines 'walking foot' for a few straight lines and your 'free motion' or 'darning' foot, to create lovely curves to outline your picture and make it really 'pop'.

A great way to practice your free- motion machine quilting! This is a 'kit' class and all fabric and threads etc., will be supplied by the tutor. The extra cost to be confirmed closer to the time of the class, however will probably be in the range of \$30-\$40. Quilt top, border, thread, batting and backing will be supplied – all you have to do is choose your design from the Dandelion or Pohutakawa options provided prior to the class and then bring along your sewing machine!

COASTAL QUILTERS CHALLENGE 2013

THEME: "TABLE TALK"

The idea behind the challenge is to use as many different types of techniques as you can and to showcase them to the maximum. Create something special for your table and give your visitors something to talk about. The plan is to use the quilts for an exhibition next year.

CHALLENGE:

Make a fabulous table runner using at least 4 different techniques chosen from the list provided below plus anything else needed to complete your work of art.

SIZE:

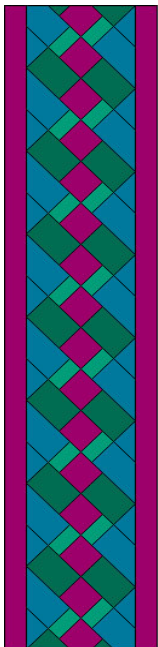
Either coffee table size: 20" x 46" - Or dining table size: 26" x 68"

FABRIC COLOUR:

Your choice – choose something to suit your decor

THE QUILT MUST:

Use at least 4 of the following techniques, and any other technique necessary to complete the quilt:



- Embroidery (machine or hand);
- Appliqué - any type (needle turned, bonded, or reverse);
- Broderie perse;
- Crazy patchwork;
- Seminol piecing;
- Paper piecing;
- Cathedral window;
- Stained glass;
- Origami;
- Couching;
- Fabric weaving;
- Fabric painting;
- Prairie points;
- Pleating;
- Pin tucking;
- Anything 3 dimensional.
- A 4" hanging sleeve.
- Have 3 layers and some quilting.

All work including the quilting must be the sole work of the entrant.

Quilt must be completed and handed in at the November 2013 club meeting.



Queries about the table talk challenge:

1. Is the size restriction strict? If you were thinking of piecing blocks it struck me that the maths into 46, 26, and 68 is a bit tricky. I guess you could use a coping strip, but??
2. People actually have different size dining tables (mine is 1.5m square) and coffee tables. Can we make one to fit our own?
3. Does it matter if the quilt is landscape or portrait?
4. Does the quilt have to be rectangular? Lots of the patterns have points at the long ends.

Response There have been some queries regarding the size of the "Table Talk" challenge quilt. This is good as it means people are thinking about it. One of the challenges is to keep to the rules that have been set, how you go about this is up to each person. The quilt can be landscape or portrait, it can have pointed or rounded ends, as a lot of table runners do have, but the overall measurements must stay within the specified size. Of course the finished quilt does not have to be used as a table runner, it can be a wall hanging. I hope you all enjoy being part of the challenge. Mine is still in the planning stage.



For Sale

I have a quilt of Adrienne Walkers I would like to sell. It called Maizey Daisies.

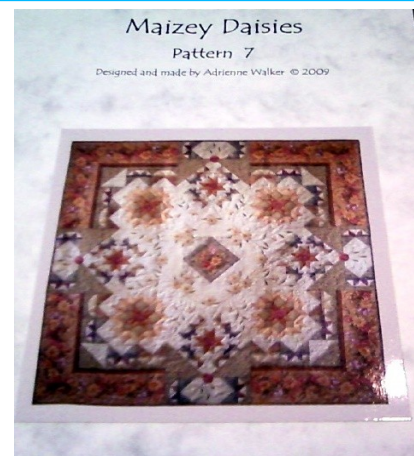
It was a block of the month I brought from Fibre Flair

\$175.00 or nearest offer

Suited to an intermediate or experienced quilter.

Anne-Marie Dunlop

Phone 04 2991469



Web sites

There are some useful hints on this web site

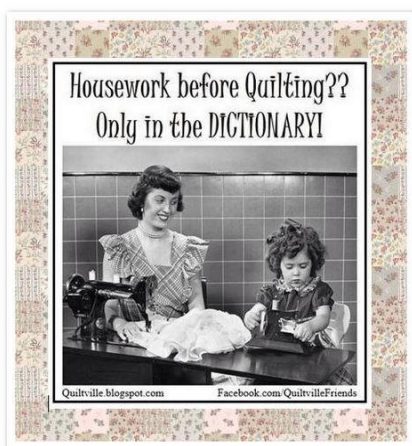
http://blog.shopmartingale.com/quilting-sewing/25-quilt-tips-from-kim-diehl-quilt-books/?utm_source=Stitch+This%21+blog&utm_campaign=2249b426de-Daily+Email%2C+Quilting&utm_medium=email

Modern Quilts Here are some lovely free BOM and tutorials

<http://sewmamasew.com/blog2/category/modern-bom/>

For those of you who love batiks this is from the Martingale blog

http://blog.shopmartingale.com/quilting-sewing/quilting-with-batiks/?utm_source=Stitch+This%21+blog&utm_campaign=8f3c6b9f8e-Daily+Email%2C+Quilting&utm_medium=email



ALISON'S QUILTING SERVICES

LONGARM EDGE TO EDGE QUILTING

CONTINUOUS PATTERN OR STIPPLING

PHONE: 04 904 4105 or EMAIL aowtierney@hotmail.com

11 Charlotte Way, Raumati South

Going Nutty?



Well the Easter Bunny was prolific last month to my children during a trip home to see family. However it was more squirrels and nuts that had me salivating when I saw that Mum's walnut tree was dropping walnuts! While I admit to being partial to the odd afghan, or walnuts tossed in a salad or crusting a cream cheese icing of a walnut laden carrot cake....it was the green husks and the dried brown husks that envelop the shell that had me gathering.

I had stashed away a link to a recipe for walnut dyeing long ago. I'd once played with a recipe Clare Smith had put up on her old blog site on dyeing with Eucalyptus leave, promising lovely red tones. I went to the same tree at the Tawa station - I got caramel tones- must have been a different time of year in our gathering.

I admit also to being a cook that doesn't often follow a recipe either which can also be a recipe for disaster sometimes....but as a busy mum of two I don't have time to follow all the steps. The dye recipe called for gloves and crumbling green hulls into pea sized chunks etc. I didn't and for a week looked like I'd either gone to a Henna party gone wrong or spent years hand rolling Cuban cigars.

I'd picked up 2 mixed bags (as I could not recall what I needed) of green husk fragments, a few whole nuts that hadn't split their green husks, dried black once were green husks on empty shells, and given the smell of a some - perhaps a few rotten black ones! (There goes any idea of a hair rinse).

Some web recipes called for salt to be added, others said no mordant was required for wool or cotton. So my boil up was done and in I popped a few bundles of wrapped and plain cotton. Delicious! A simmer for an hour on the BBQ and I had a few dark caramel pieces. Another dip and hopefully I will have dark chocolate treats without the calories! Recipe from Practical Primitive if you too have access to a walnut tree.

How to make Black Walnut Dye:

- 10-15 green husks of black Walnuts will make one gallon of dye.
- Wear gloves (stain lasts a week or two on hands), remove the husks. Pound the walnut with heavy object to break open the hull.
- Use husks right away or dry for later use. (While they are drying, make sure they get plenty of air circulation or they will go rotten/mouldy.) Hulls will oxidize and go dark brown. This stains! Crush/crumble the hulls into pea size bits.
- Using stainless steel or enamelware pot, heat one gallon of water to a full boil, add the crushed hulls and stir. Reduce heat and simmer, uncovered about an hour.
- Add scoured (wool) or washed material to the simmering dye bath.
- Simmer, stirring occasionally, until the material is 1 shade darker than desired.
- Remove material, rinse till water clear. You can return to dye bath if darker shade required. Dry. NOTE: Wash material/dyed clothing separately the first time in case item not rinsed properly. Excess dye WILL stain. After that, wash as usual with other like-colored items.
- Cool dye bath; pour excess into a glass jar for reusing.



<http://www.practicalprimitive.com/skillofthemoth/blackwalnutdye.html>


Perhaps later on in the year a group of interested members could get together and try a boil and brew session of natural dyeing?

Lee-Ann Newton



Informal Stitching Groups



 **Lesley Hall** runs two informal stitching groups at 48 Motuhara Road, Plimmerton Tel 04 233 8194. First Friday of the month after 7pm and Tuesdays any time after 11am. Bring your own lunch and Lesley will provide cups of tea. Everyone is welcome.

Hand Sewing Group


English Paper Piecing Group & the Appliqué Group have combined and now meet on the first Wednesday of each month at 1.15pm until 4pm or so

New members are very welcome, it's a great way to meet other members. If you haven't been before and need instructions on how to get to Marge's house, please ring on 04 2399497. Or email at mhurst@top.net.nz

Stitching Group, 1-5pm 25th May, St Andrew's Church Hall Plimmerton

This group is a well kept secret, one you should perhaps not miss out on! If you have a quilt to pin you will have willing helpers and with the tables raised backache and sore knees are eliminated! Are you in need of inspiration for a UFO? Ideas are exchanged, problems sorted! Would you enjoy getting to know some Coastal Quilter members better? All this and more! This group meets on the fourth Saturday of every second month to stitch, pin, get inspiration, chat... There are laughs, smiles, tea and goodies too!

All welcome – see you there for what ever reason! Enquiries to Lesley Hall.

 **Coffee Group** contact Jan Wills 04 235 7651 for details of this group which meets in each others homes. An opportunity to develop friendships, talk quilting... over tea or coffee. They have been known to go shopping too, and have a challenge on the go.

Forthcoming Events 2013

Please note that this information is taken from a number of sources.

Whilst all care has been taken to ensure that it is correct Coastal Quilters cannot guarantee the details therefore please check if possible before attending events.

Coastal Quilters Events

15 April–16th June Coastal Quilters 25th Anniversary Exhibition, Pataka, Porirua

11th May Coastal Quilters Work day with Milton Wright fabrics, Liz Fisher (threads & needles) the 'Scissor man'

25th May Sit & Stitch (see above)

8th June Coastal Quilters Speaker - Ann Packer. <http://annpacker.co.nz/books.html>

13th July Coastal Quilter Meeting AGM. *

1st-3rd November Auckland at Festival of Arts Harbour Function Centre, North Harbour Stadium, Oteha Valley Rd, Albany <http://www.apqg.co.nz/pages/Auckland-Festival-of-Quilts.htm>

15 June - 22 September 2013

I don't know how many travellers we have but members may be interested that the quilt exhibition held at the V&A in London a couple of years ago will be in Brisbane at the Queensland Art Gallery.

18th-23rd July National Symposium Taupo <http://www.tauposymposium.co.nz/default.aspx>

5th-6th October 10am-4pm Rangitikei Country Quilters – Biennial Exhibition, Rangitikei College, Bredins Line, Marton

Exhibitions at Minerva Textile Gallery & Bookshop, 237 Cuba Street, Wellington

Diana Parkes – A retrospective – showcasing surface design & embroidered works by the late Diana Parkes

For list of more events from NZ Quilter go to <http://minerva.co.nz>

*** Our AGM this year marks the beginning of Coastal Quilters 25 years ago. With this in mind following 'routine business' there will be time to celebrate with a big show and tell and more. Look for details in the June newsletter! Also time to be thinking if you would like to come on the committee!**

Sue B's Quilting Service

I offer a quilting service on my Gammill Classic commercial quilting machine. My machine can stitch a quilt of up to 125" (3.2m) in width.

I can stipple your quilt, quilt it freehand, use a pantograph (which is an edge to edge repeat pattern) or I can baste your quilt if you wish to hand or machine quilt it yourself.

There is no need for you to pin or tack your quilt.

Backing and batting need to be at least 6" to 8" wider than the top. (That is 3" to 4" wider on all four sides).

Please ensure the top and backing are square and that there is no extra fabric in your borders as this may result in puckering.

I have over 15,000 patterns available. I have Sharon Perry's pattern collection which can be found at www.houseofcreations.biz and more from Kim Diamond www.sweetdreamsquiltstudio.com Designer and Heritage Collections and also Tammy Finkler's Collections 1-10 www.tkquiting.com

Check out my website: suebsquilting.co.nz

Service	Price per sq.ft.	
No pinning, no tacking		Custom
Basting \$1.00		Large stipple \$4.00
Edge to Edge from \$3.00		Medium stipple, stitch in ditch \$4.50
Attach binding (per metre) \$5		Small stipple, cross hatching from \$5.00
Binding & stitching down (per metre) \$8		

Sue B's Quilting Service

7 Dennis Way
Island Bay
Wellington 6002

Coastal Quilters Information

We meet monthly on the 2nd Saturday at 1.45 doors open at 1.15pm, at Plimmerton Pavilion, Sunset Parade.
Annual subscription \$25, or \$30 if paid after September.
New members joining after January \$12.50 for half year till 31st May.

Committee Members

President:	Lou Nicoll	234 7070	lou.nicoll@xtra.co.nz
Vice President	Louise Shirkey	239 9718	lougeoff@xtra.co.nz
Secretary	Isobel Whooley	234 6650	isobelwho@hotmail.com
Treasurer	Yvonne Wilson	239 9238	bywilson@xtra.co.nz
Classes & Workshops	Lou Nicoll	234 7070	lou.nicoll@xtra.co.nz
Welcome Quilts	Gayle O'Brien	233 8454	asmatthews@xtra.co.nz
Memberships, rosters & retreats	Louise Shirkey	239 9718	lougeoff@xtra.co.nz
Newsletter Editor & Almoner	Rachel-Mary Perry	233 8940	rm_pjerry@yahoo.co.nz
Meeting Co-ordinator:	Lesley Hall	233 8194	
Librarian	Shirley Earles	478 4533	selrae@xtra.co.nz
Raffles & Sales	Robyn Burch & Anne-Marie Dunlop	902 4985	robynburch@xtra.co.nz
Website	Anne Marie Dunlop	299 1469	annemariadunlop@yahoo.com.au
Exhibition	Ngairé Flynn	477 1688	ngairef1@gmail.com
Bus trips	Doreen Herbert	905 4811	doreen.herbert@paradise.net.nz

Valued workers: thank you

Sharon Ferguson & Julie Bate (Chief Tea Ladies), Linda Wakefield, Christine Blitz, (Library),
Lisa Avery & Jan Wills (Raffle)



Closing date for next (June) months newsletter is 17th May

I will be away from 5th May – 18th July and during that time Alison Tierney aowtierney@hotmail.com has agreed to produce the newsletter so please send her anything you have to add.

This months newsletter is longer than usual thanks to items sent in – a big thank you to those contributors.

